



**wrap**  
consulting  
engineering

**capability  
statement**  
**specialist lighting**



W\_Atrium

vivi

*Specialist lighting is about creating spaces of comfort for people.*





### **STEVE BEER**

Steve has been a Director of WRAP Engineering since 2017, and is a highly experienced electrical engineer and specialist lighting designer. His practical approach ensures lighting is appropriate for a space, whilst his inherent appreciation of new technologies and flow-on effects lends itself well to enhancing spaces aesthetically. He has been a judge of the Victorian and Tasmanian IES Lighting Awards three times.



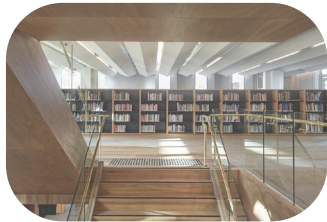
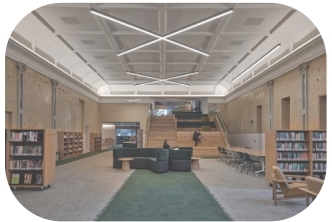
## *specialist lighting*

A blend between art and science, **Specialist Lighting** aims not only to beautify the built environment, but also to develop functional and comfortable spaces for occupants. WRAP Engineering focuses on balancing budget, quality, functionality, and suitability for our wide range of projects. With increased awareness of light quality and its impact upon spaces and people, specialist lighting is a key component in making spaces work.

# *services*

- Architectural lighting design.
- Architectural lighting concept reports.
- Architectural lighting layout and section details.
- Environmentally sensitive outdoor lighting design.
- Lighting calculations.
- Dynamic lighting control schemes.

# project experience



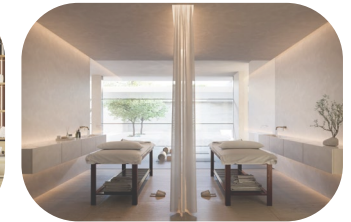
**WARNAMBOOL LIBRARY & LEARNING HUB**

An educational community hub with heritage features adapted wherever possible to create a contemporary library, youth services, café, and study/presentation areas. With a strong interior focus on natural materials such as wood, the lighting strategy included harnessing daylight off the striking architectural features to bring the outdoors in. High quality luminaires were utilised to minimise glare whilst providing adequate illumination for effective learning areas. The library's honeycomb ceiling was enhanced with lighting to create an impactful visual effect looking in from the outside.



**NOVOTEL HAWTHORN, GLENFERRIE ROAD**

Design for a brand new 98-key Novotel hotel of seven storeys located in the high-growth inner suburb of Hawthorn, incorporating retail and food and beverage at ground floor, plus two levels of basement car parking accessed via a rear laneway. With architectural design by Elenberg Fraser, the specialist lighting design needed to complement the hotel's visual appeal and ambience of luxury, whilst ultimately providing a comfortable and inviting environment in which guests could relax. Light was gently harnessed off surfaces and placed discreetly throughout the project.



**ST GEORGES ROAD, TOORAK**

A luxury private residence containing eight bedrooms, a six-car garage, library, wellness, theatre, games and music rooms, galleries, kitchen and butler's pantry. Warm colour temperatures were used to create an inviting, homely environment, whilst reflective lighting was carefully incorporated throughout the structure to contrast against and highlight the stunning design features by Alta Architecture. Ambient luminescence and cove lighting were also adopted for visual effect and user comfort, in addition to highlighting textures with light to amplify architectural elements.

**wrap**  
consulting  
engineering

132 Chestnut Street, Cremorne 3121  
Level 4, 60 Moorabool Street, Geelong 3220

[wrapengineering.com.au](http://wrapengineering.com.au)

[admin@wrapengineering.com.au](mailto:admin@wrapengineering.com.au)  
(03) 9428 7987 | ABN 73 612 992 720